

What if hot aisle and cold aisle are separated ? Validation using **STREAM**

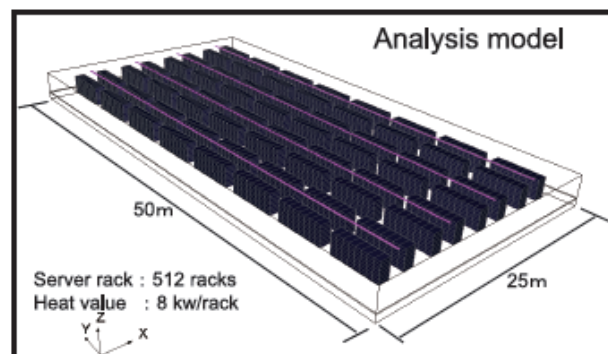
Hot/Cold aisle

Hot aisle :

The space where exhaust heat air from server are gathered

Cold aisle :

The space where cold air from air-conditioner are gathered



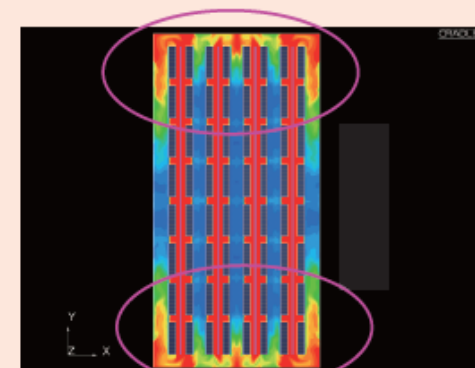
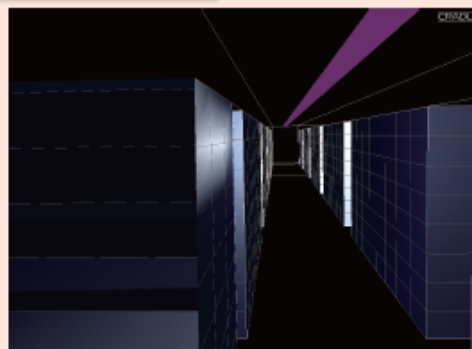
The problem with original design

The hot air from the hot aisles flows into the cold aisles and decreases the efficiency of servers. (Fig.2)

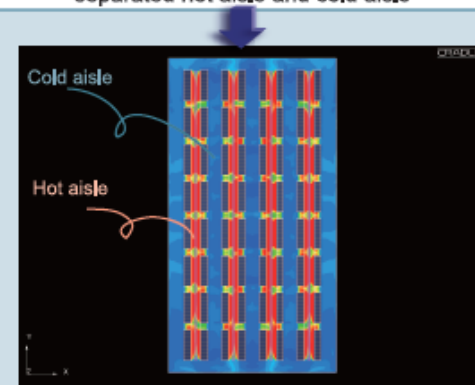
Counter measure

Decrease the amount of hot air entering into cold aisles by installing partitions from upper server racks to the ceiling. (Fig.3)

before



after



comment

- Maximum temperature inside the data center improved lower by separating hot aisle and cold aisle using partitions.
- CFD using STREAM enables you to shorten the span of designing and to improve energy efficiency and environment consciousness by calculating various design of structural layout such as air-conditioner location or the air volume.